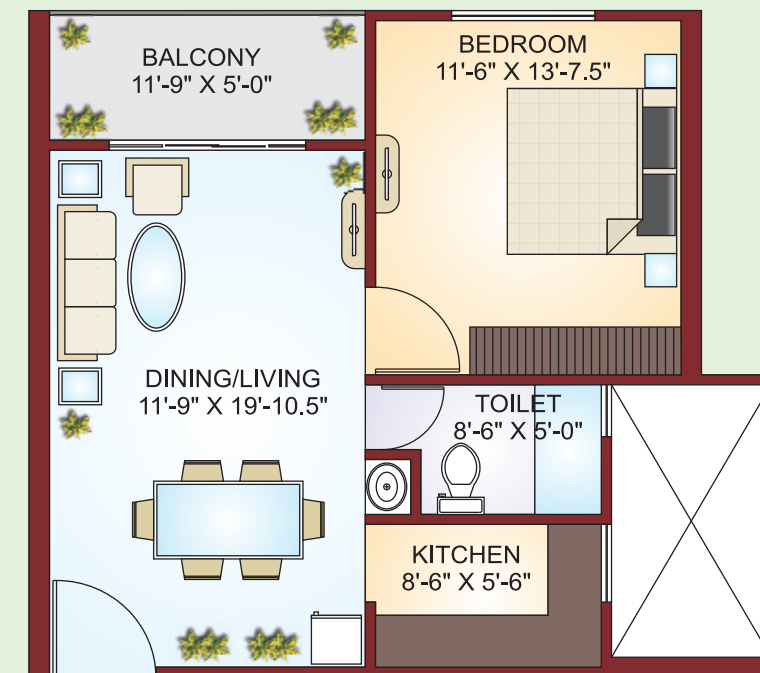
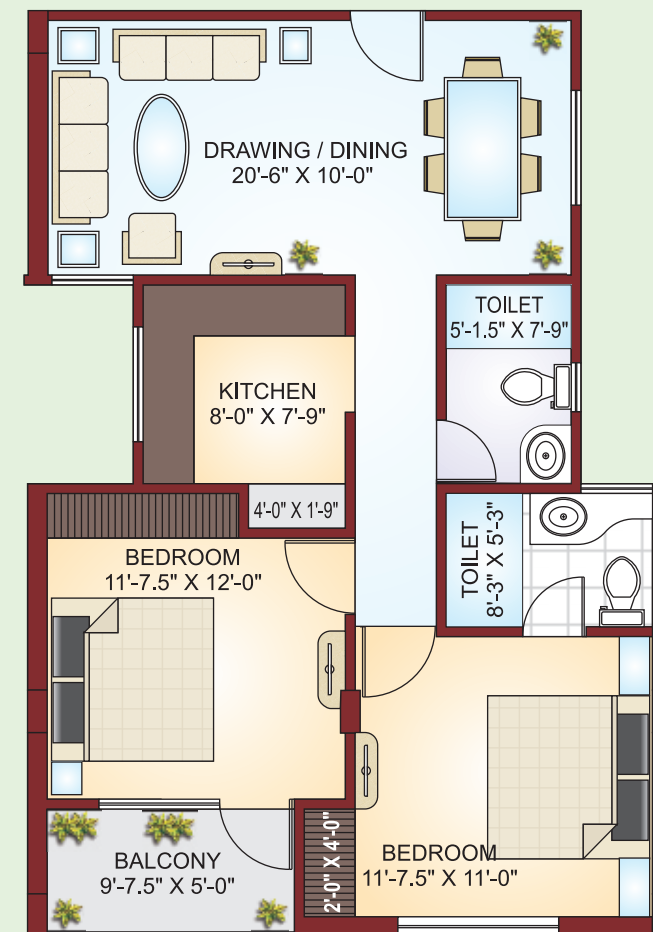




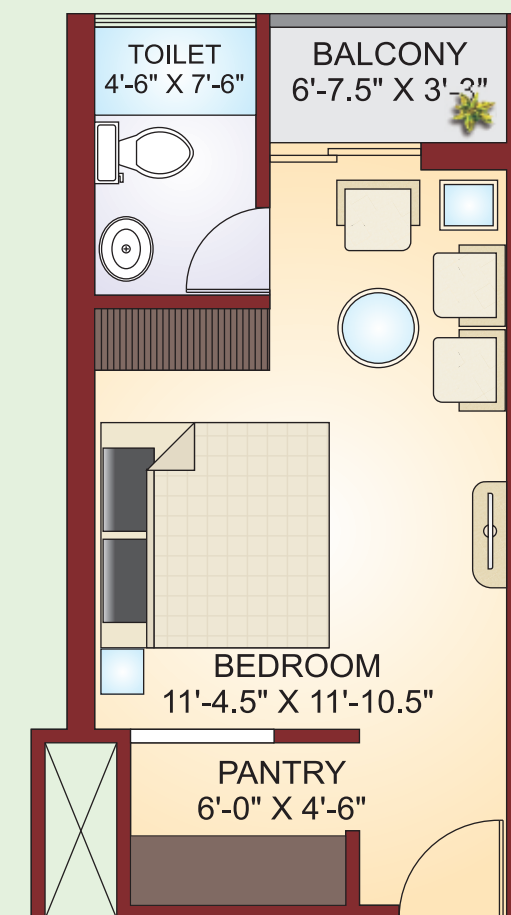
Floor Plan Upper Floors



Sapphire (Super Built Up Area 675 Sq.ft. Approx.)



Emerald (Super Built Up Area 900 Sq.ft. Approx.)



Pearl (Super Built Up Area 355 Sq.ft. Approx.)

✓ The right choice

Floor Plans may change as per advice of Architect



This is not a legal document. All floor plans, site plan, specification, Amenities facilities, photos and perspective view are tentative in nature and are subject to revision.



Phase I



It Makes A Business Sense!

✓ The right choice



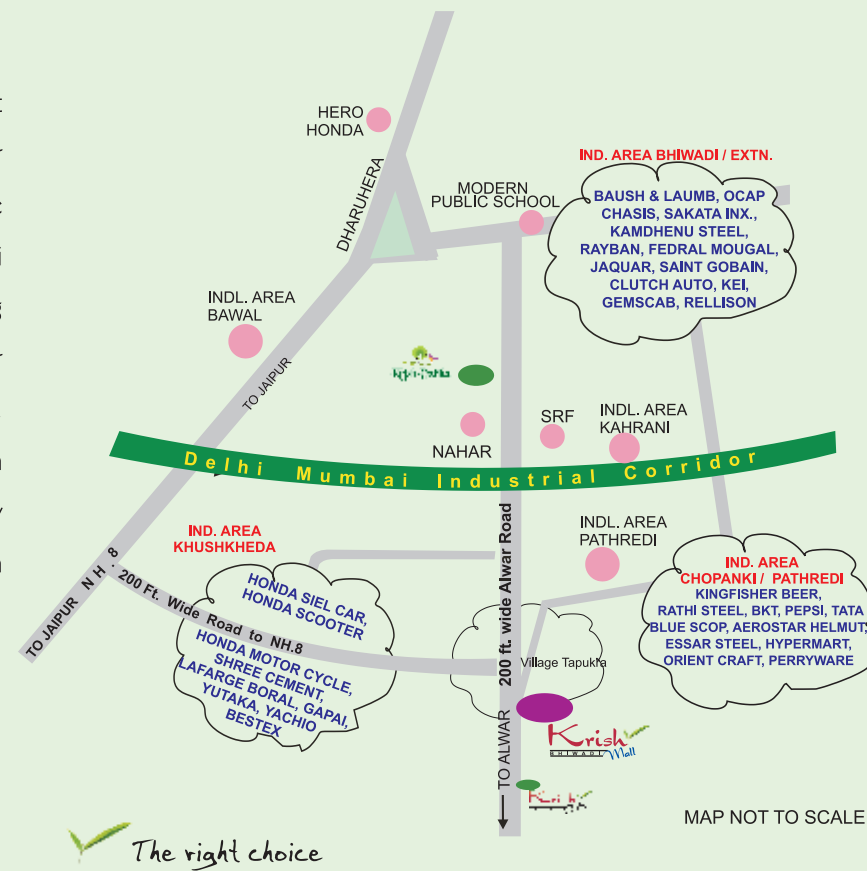
The Promoters

The Promoters of Krish Mall are highly qualified and belong to a very successful business family of the same locality in which the project is situated. Promoters have a long experience in the various fields of business. The leading Trading House of Cement, Steel & Construction Materials in Delhi NCR. Now they have successfully diversified into the real estate business with already two projects in very advance stage of completion. Co-promoter of Krish Vatika, a Group Housing Complex of approx. 6 lakh sq.ft. and Krish City, an Integrated Township of approx 50,000 sq. meter in Bhiwadi. Possession of Krish Vatika Phase I is almost ready and construction activity in Krish City is in full swing. As usual we are about to fulfill our commitments in these projects and Krish Mall is yet another milestone in the success story of the promoters.



The Location

Krish Mall is situated right on the 200 feet wide Four Lane Mega Highway (Alwar Bhiwadi Road) and in the centre of three main Industrial clusters of Bhiwadi, Chopanki and Khushkhera. The project is on walking distance from Honda Car Plant, Honda Motor Cycle & Scooter Plant, Shree Cement, Lafarge Boral etc. and 10 min away from Bhiwadi and Chopanki. The close proximity to Delhi Mumbai Freight Corridor is an additional advantage to the location.



The Project

The Krish Mall is first Approved Commercial Complex of the region, situated in the centre of the third largest industrial hub of the country where business activities are on the boom. Krish Mall offers showrooms, food court, restaurant, shops, studio apartments offices and service apartments etc. It provides ample open space, adequate parking space, power back up, ample water supply and other modern amenities . Needless to say it is a dream come true.

Specifications

	Shop/Office	Studio/Service Appts
Structure	Earthquake Resistant RCC	Earthquake Resistant RCC
Flooring	Antiskid Ceramic Tiles	Vitrified Tiles in Drawing/Dinning & Antiskid Ceramic Tiles in Rooms / Pantry / Toilet
Kitchen	--	Prepolished Stone Counter 2Ft High Dado SS Sink
Toilet	--	7ft. High Wall Tiles Branded Chinaware & CP Fittings
Electrical	Concealed Conduiting & Copper Wiring	Concealed Conduiting & Copper Wiring
Finishing	OBD Interior Paint Textured Exterior Paint	OBD Interior Paint Textured Exterior Paint
Shutters	MS Shutters with Paint	Wooden/Prestressed MS Door, Window Frames Glazed Window Shutters & Flush Doors.

Facilities

- Gated Complex • 24 Hours Security • Ample Green Area • 24 Hour Water Supply • Public Toilet facilities
- 300W Power Backup • Ample Parking Space • Covered Drainage System • STP • Rain Water Harvesting
- Post Handing Over Maintenance • Well Maintained Roads • Street Light.

The right choice



Site Plan (Ground Floor)



The right choice